



**FOOTBALL
NORTHERN
TERRITORY**

Competition Regulation

Season 2022 – Senior Football
(Updated April 2022)

Football NT Inc

ADDRESS: 131 ABALA ROAD MARRARA | PHONE: 08 8928 1006

Table of Content

DEFINITIONS.....	1
1 INTRODUCTION.....	4
1.1 PURPOSE.....	4
1.2 INTERPRETATIONS.....	4
1.3 COMPETITION MANAGEMENT	4
1.4 IMPOSITION OF SANCTIONS	4
1.5 BROADCAST MATCHES – COPYRIGHT.....	4
2 REGISTRATION OF PARTICIPANTS AND CLUBS.....	5
2.1 CODE OF CONDUCT	5
2.2 PLAYERS.....	5
2.3 CLUB, CLUB OFFICIALS AND TEAM OFFICIALS.....	6
2.4 MATCH OFFICIALS	7
2.5 REGISTRATION PERIODS	8
2.6 REGISTRATION DEADLINE.....	8
2.7 PRIORITY OF REGISTRATION	9
2.8 FNT MID-SEASON PLAYER REGISTRATION	9
2.9 CHANGES TO REGISTERED INFORMATION	10
2.10 INTERNATIONAL TRANSFER CERTIFICATE	11
2.11 DEREGISTRATION	11
3 COMPETITION STRUCTURE	13
3.1 COMPETITIONS STRUCTURE AND NOMINATIONS	13
3.2 REPRESENTATIVE, INSTITUTE AND DEVELOPMENT SQUADS.....	13
3.3 SENIOR COMPETITION.....	14
3.4 ALTERATIONS TO DRAWS	15
3.5 POSTPONED MATCHES	16
3.6 TEAMS WITHDRAWING OR EXPELLED FROM COMPETITION	16
3.7 MATCH POINTS	17
3.8 FINALS SERIES.....	17
3.9 EXTRA TIME	18

3.10	VENUES AND ADMISSION CHARGES	19
4	MATCH DAY	20
4.1	COACH ELIGIBILITY	200
4.2	PLAYER ELIGIBILITY	200
4.3	DETERMINATION OF MATCHES PLAYED.....	211
4.4	NUMBER OF PLAYERS	211
4.5	DURATION OF MATCHES.....	222
4.6	FAILURE TO PLAY A MATCH	222
4.7	ABANDONED MATCHES	222
4.8	TEAM SHEETS	233
4.9	MATCH SHIRTS.....	244
4.10	MATCH BALLS.....	255
4.11	MATCH OFFICIALS	255
4.12	FORFEITS.....	266
4.13	TECHNICAL AREA	277
4.14	INTERCHANGE AND SUBSTITUTIONS	277
4.15	MATCH REPORTS.....	288
4.16	GROUNDS	288
5	DISCIPLINE, DISCIPLINARY COMMITTEE, CHARGES AND DISPUTE RESOLUTION.....	Error!
	Bookmark not defined.0	
6	FINANCE.....	30
6.1	REGISTRATION FEES	30
6.2	MATCH FEES	31
6.3	PAYMENT OF INVOICES	31
6.4	SANCTIONS	31
6.5	FINES	31
6.6	GATE REVENUE.....	31
6.7	RECORD MAINTENANCW	32
6.8	BONDS	32
7	INTERPRETATIONS AND DEFINITIONS.....	37
7.1	INTERPRETATIONS.....	37

DEFINITIONS

Amateur means any Player who is not a Professional as defined in the National Registration Regulations.

Away Team means the Team that is the second named on the draw.

Board means the body made up of elected Directors of the Federation.

Club means any Club registered with FA in accordance with the National Registration Regulations from time to time. A reference to Club includes a Club admitted by a Competition Administrator to field a Team in a Competition.

Club Official means any person involved with the administration, management or organisation of a Club (whether paid or unpaid), including employees, contractors, consultants, officers and directors, and representatives.

Code of Conduct means the national football code of conduct as promulgated by FA from time to time (a current version of which can be obtained on www.footballaustralia.com.au or on request).

Competition means any Competition or tournament registered with FA in accordance with the National Registration Regulations for Football NT, including the pre- Season, Season proper, finals series and any post Season tournament or knockout cup Competition. For clarity, the Men's Premier League is a competition, the Men's Premier League Reserves is a separate competition, as is Division 1. This also applies to the Women's Premier and Premier Reserves Leagues.

Competition Administrator means the entity responsible for the conduct and staging of a Competition.

Competition Regulations means the regulations governing the administration and conduct of a Competition under the auspices of Football NT (FNT).

Delegate means the representative nominated by a Club to represent that Club at meetings and to be authorised to deal with the Competition Administrator or Football NT regarding Club issues.

Disciplinary Committee means the FNT Disciplinary Committee constituted in accordance with the Grievance Resolution Regulations that has jurisdiction over the Competition.

Disciplinary Regulations means the national football disciplinary regulations as promulgated by FA from time to time (a current version of which can be obtained on www.footballaustralia.com.au or on request).

Football NT or FNT means Football Northern Territory Incorporated.

FA Statutes means FA's statutes and regulations as promulgated by FA from time to time, including its constitution and by-laws and rules, and policies and procedures.

FIFA or Federation Internationale de Football Association means the world governing body of Football.

FA or **Football Australia** means the governing body of Football in Australia.

FIFA Statutes mean the statutes and accompanying standing orders and regulations promulgated by FIFA from time to time, including the Regulations on the Status and Transfer of Players, Code of Ethics, Disciplinary Code, Players' Agents Rules and Regulations Governing Match Agents.

Grievance Resolution Regulations means the regulations promulgated by FA from time to time setting out the procedures applying to grievances and disputes in football (which can be obtained on www.footballaustralia.com.au or on request).

Home Team means the Team that is the first named on the draw.

Institute means any national, state or territory institute or academy of the sport that has a football program including any national training center implemented by either FA or a Member Federation.

Junior means Matches or Competitions including Small Sided Football and up to but not including Youth.

Laws of the Game means the laws governing or regulating the playing of Football as determined by FIFA, FA, FNT and local rules as adopted from time to time.

A match means any Match staged, participated in, sanctioned by or played under the auspices of FA, a Member Federation or a Competition Administrator.

Match Official means a Referee, assistant referee, fourth official, Match commissioner, referee inspector, selector, any person in charge of safety or any other person appointed by FA, a Member Federation or a Competition Administrator to assume responsibility in connection with a Match.

Office of Football NT means the postal address of the Federation being GPO Box 3105 Darwin NT 0801.

Officer of Football NT means any Board Member or employee of Football NT.

Official means any Club Official and/ or Team Official.

Player means any person who is, from time to time, registered to a Club whether that person is male or female, junior or senior or an Amateur or Professional.

PlayFootball means the national registration system provided by Football Australia.

Professional means a Player who is paid to play football, as defined in the National Registration Regulations.

Professional Player Contract means the mandatory form of contract for the casual employment of a Professional as specified in the National Registration Regulations.

Premier League means the top tier of Men's football in the Northern Territory.

Registrar means a person appointed by a Club as their representative for all matters relating to Player registrations.

Referee means a Referee duly appointed to officiate at a Match.

Registration Period means the period in which a Player must be registered with a Club as specified in these Rules.

Regular Season means the Matches played between the Clubs during the Season to determine the Clubs that compete in the Finals Series and includes all Matches played in the Season that is not in the Pre-Season, Cup Competitions or the Finals Series.

Representative Team means a Team representing a State or Territory, a region, or an Institute that participates in a Competition.

Ring In means a Player who plays under the name of another registered Player's name or a false name.

Rules mean Competition Rules.

Season means the period starting with the first Match of a Competition and ending on the last Match of that Competition.

Senior means Matches or Competitions for open-aged males or females and Youth Competitions.

Team means a squad of Players from a single Club competing in an authorised Football NT Competition.

Team Sheet refers to Team Sheets or Match Cards.

Team Official means any personnel involved with the management, preparation or participation of a Club's Team (whether paid or unpaid), including the coaches, managers, medical staff (including Team or Match day doctor), physiotherapists, gear persons and other support staff.

Weekday Fixture means a Match scheduled to be played on a day other than those defined as a Weekend Fixture.

Weekend Fixture means a Match scheduled to be played on a Friday, Saturday or Sunday and on a Monday where that day is classified as a public holiday

1 INTRODUCTION

1.1 PURPOSE

The purpose of these Rules is to assist in the administration of Competitions under the control of Football Northern Territory (**Football NT**).

1.2 INTERPRETATIONS

Football NT and Competition Administrator shall always be empowered to interpret these Regulations to make such rulings deemed appropriate in the circumstances. Such rulings are to be documented and are subject to the appeal processes provided for within these Regulations.

1.3 COMPETITION MANAGEMENT

- 1.3.1 Football NT is the Competition Administrator who is responsible for the management of all Competitions.
- 1.3.2 The Competition Administrator will always ensure its objectives are consistent with the objectives of Football NT.
- 1.3.3 The Competition Administrator shall deal with Clubs, Officials and /or Players in respect of offences and/or complaints and with any matter not otherwise specifically provided for in these Regulations, including Clubs being held to account for the actions of its Officials, Players and/or supporters. After an inquiry, if the Competition Administrator deems a Club has committed a breach of the provisions of these Regulations or conducted itself in a matter prejudicial to the interests of football, they may refer the matter to the Disciplinary Committee.

1.4 IMPOSITION OF SANCTIONS

Football NT and the Competition Administrator are empowered to impose sanctions in accordance with these Regulations and Part V of the FA Statutes. The sanction may be, but not limited to, a reprimand, fine, loss of points or expulsion from a Competition. Clubs, Officials or Players shall be entitled to appeal against a sanction pursuant to these Regulations and FA's Grievance Resolution Regulations.

1.5 BROADCAST MATCHES – COPYRIGHT

The copyright for all Matches under the jurisdiction of Football NT shall remain with Football NT. No such Match shall be telecast via live streaming or broadcast without the prior written consent of Football NT.

2 REGISTRATION OF PARTICIPANTS AND CLUBS

2.1 CODE OF CONDUCT

2.1.1 All Players and Club Officials are bound by and must comply with all FA Statutes and Regulations, including without limitation the FA Code of Conduct.

2.1.2 The FA Code of Conduct aims to promote and strengthen the reputation of football in Australia by establishing a standard of performance, behaviour and professionalism for its Members (as defined in the Code of Conduct) and stakeholders. In addition, it seeks to deter conduct that could impair public confidence in the honest and professional conduct of matches or in the integrity and good character of its members.

2.2 PLAYERS

2.2.1 Players who are registered participants in Football NT Competitions will be either Professional or Amateur Players as prescribed in the National Registration Regulations (NRR).

2.2.2 As per the FA National Registration Regulations:

- i. A Player participating in football is either an Amateur or a Professional;
- ii. A Professional is a Player who has a written contract with a Club (NRR05), under which he or she is paid to play football for that Club;
- iii. An Amateur is any player that is not a Professional. A Club may pay or reimburse an Amateur Player any expenses incurred by that Player without affecting the Player's Amateur status, including for travel, kit, equipment, or insurance premiums. If however, an Amateur is reimbursed more than \$110 a week by a Club, the onus is on that Club to satisfy Football NT that the amount paid, accurately reflects the expenses incurred by that Player. If the Club fails to satisfy this onus, that player will be deemed to be a Professional Player;
- iv. A Player may only be registered with one (1) Club in each form of the game at any time in line with the FA National Registration Regulations and FIFA. Football NT has discretion to permit players to play in multiple clubs that do not compete in the same competition (ie. Invited Players);
- v. A Player may also be registered as a Futsal/Social Player without affecting a Player's registration with other football types;
- vi. A Player may be registered for a maximum of three (3) Clubs in each form of the game during a Season. During this period, the Player is only eligible to play in Matches (other than friendly and trial matches) for two (2) Clubs in each form of the game.

- 2.2.3 All Players must be registered in accordance with the FA National Registration Regulations.
- 2.2.4 For a registration to be deemed valid the Club Registrar must set the Player's status as being "Active".
- 2.2.5 The accountability and responsibility of making a registration active, lies with the Club. Any unpaid monies relating to the registration of a Player, after it has been activated remains the responsibility of the respective Club. It is strongly recommended that a player is not activated before full payment is received and if any payment agreement has been made between a club and a player, then this agreement is made in writing. Football NT may request evidence of this written agreement before facilitating a player transfer. Any agreement in writing is only valid in the season in which the agreement refers to.

2.3 CLUB, CLUB OFFICIALS AND TEAM OFFICIALS

- 2.3.1 All Club Officials and Team Officials **must** be registered within *PlayFootball*.
- 2.3.2 Each Club must be registered with FA in accordance with the FA National Registration Regulations:
- a) By completing the Prescribed Form *NRR 02 – Application for Registration of Football Club* located at www.footballaustralia.com.au. Tab on About FA then tabs on Statutes and Regulations.
 - b) For a newly formed Club, completing and lodging this form to the Federation prior to the commencement of their inaugural Season in accordance with the rule 2.3.3
 - c) Club names must be approved by Football NT, after being reviewed in accordance with FA directives.
 - d) Every Club shall participate in the FA NCAP accreditation process during 2022;
- 2.3.3 A Club must apply to the Competition Administrator for approval to enter the Competition under the jurisdiction of the Federation.
- 2.3.4 Clubs who wish to nominate for:
- a) **Premier League** - shall apply for entry according to these regulations. Entry will be at the discretion of the Competition Administrator.
 - b) Division 1 League – shall apply for entry according to these regulations. Entry will be at the discretion of the competition administrator.

- 2.3.5 The Federation may require a Club to lodge a bond to compete in Competitions. Any such bond is required to be paid prior to any Team representing that Club participating in any Competition including pre-Season and/or friendly Matches.
- 2.3.6 All Coaches and Team Manager's must be registered to be involved with a Club participating in Northern Territory Competitions.
- 2.3.7 An application for registration as a Coach or Team Manager by a Club shall be made by completing the following requirements:
- a. Registration on the Play Football system;
 - b. Working with Children Clearance in accordance with NT Police SAFE NT.
- 2.3.8 The registration can be made active in the Play Football system, once the Club has sighted the applicant's working with children clearance, also called an Ochre Card.
- 2.3.9 All coaches that coach within Northern Territory Competitions must hold the recognised minimum level of coaching accreditation required as stipulated in the Licensing Criteria.
- 2.3.10 Failure to comply will result in non-issue of Accreditation.

2.4 MATCH OFFICIALS

- 2.4.1 All match Officials **must** be registered within *PlayFootball*.
- 2.4.2 All Match officials must be registered to be involved with refereeing in Northern Territory Competitions.
- 2.4.3 An application for registration as a referee by an individual shall be made by completing the following requirements:
- a) Registration on the Play Football system;
 - b) Working with Children Clearance in accordance with NT Police SAFE NT.

- 2.4.4 The registration can be made active in the Play Football system, once the FNT's Referee Manager has sighted the applicant's working with children clearance, also called an Ochre Card.
- 2.4.5 All match officials that in Northern Territory Competitions must hold the recognised minimum level of accreditation required as stipulated.
- 2.4.6 Failure to comply will result in non-issue of Accreditation or appointments.

2.5 REGISTRATION PERIODS

- 2.5.1 Senior Amateur Players can only register between 1 January to 30 July of the competition year.
- 2.5.2 Junior Amateur Players can only be registered between 1 January and the last day of the regular Season.
- 2.5.3 A Professional Player can only be registered from 8 January to 5 February.
- 2.5.4 All Amateur Players must be registered via the Play Football system. The registration of an Amateur Player with a Club is effective from the date the individual is made active by the Club, subject to International Transfer Certificate requirements.
- 2.5.5 If a Player is registering for the first time, that Player must provide the Club with evidence of name and age, by producing an original birth certificate, passport, drivers licence or similar form of identification.
- 2.5.6 Unless cancelled earlier, an Amateur registration is effective from the date of being made active in the Play Football System until the end of the Competition in which the player is registered.
- 2.5.7 A Club that wishes to register an Amateur Player outside of the designated Registration Period must lodge a written request to the Competition Administrator for prior approval. The Competition Administrator's decision shall be final and non-appealable.

2.6 REGISTRATION DEADLINE

A Player's registration must be made active by the Club via *PlayFootball* at least two (2) working days before that Player to be eligible to play in the next round of scheduled Matches.

2.7 PRIORITY OF REGISTRATION

- 2.7.1 A Player can only be registered with one Club in accordance with the FA National Registration Regulations.
- 2.7.2 If a Player registers with more than one Club, priority of registration shall be allocated to the Club that first registered the Player in accordance with the FA National Registration Regulations.
- 2.7.3 A Club that knowingly induces a Player to sign an FA registration form in the knowledge that the Player has already registered with another Club shall be fined \$500 per offence
- 2.7.4 Football NT, at its discretion, may sanction a Player that is registered for more than one Club at any given time during the Season.
Exceptions to 2.7 exist in accordance with 2.2.2.

2.8 FNT MID-SEASON PLAYER REGISTRATION

For all player mid-season registrations, the following guidelines must be followed by all clubs:

If an Amateur no longer wishes to play for his or her Club, he or she may allow the registration to lapse.

2.8.1 Player

If the Amateur wishes to change Clubs during a Season, the Amateur must either:

- a) complete and sign the Notification of Cancellation of Amateur Registration (Prescribed Form 08) and send a copy to the Club and the Competition Administrator; or
- b) apply to de-register via the National Online Registration System, which will notify the Club and the Competition Administrator of the Player's intention to change Clubs.
- c) From 2022, A Player may only change clubs after the completion of 7 weeks of that competition (Transfer window opens 1 June 2022). This rule applies to Premier League and reserves men and women. Division 1 Players are exempt from the above rule and can transfer between clubs during this period. Please note, senior players cannot register for any club after 30th July. FNT under exceptional circumstances may allow players to transfer between clubs and the FNT Competition Administrator's decision on this matter will be final without recourse to an appeal.

2.8.2 Club

If a Club no longer wants an Amateur to play for the Club, that Club must either

- a) complete the Notification of Cancellation of Amateur Registration (Prescribed Form 08) and send a copy to that Amateur and the Competition Administrator; or
- b) apply to de-register the Player via the National Online Registration System, which will notify the Player and the Competition Administrator of the Club's intention to de-register the Player.

2.8.3 Process

The de-registration of an Amateur from a Club is effective:

- a) immediately when the other party (i.e. Club or Player as the case may be) has confirmed the notification of cancellation; or
- b) seven (7) days from the date the Player requested the de-registration in accordance with article 9.2(b) or (c) in National registration Guidelines (as the case may be) unless a Grievance has been initiated with the Competition Administrator in accordance with article 16.2 of these Regulations within 48 hours from when the club receives an email from the national online registration system advising de-registration.

2.8.4 Football NT

No re-registration will be possible without Football NT being advised and a clearance has been issued by Football NT prior to approving the player in the PlayFootball registration system.

2.8.5 New Club

The registration of an Amateur with a new Club is effective from the date the Player is registered in the National Online Registration System and such registration has been accepted by the Club after checking with Football NT's competition administrator.

2.9 CHANGES TO REGISTERED INFORMATION

If there are changes to the registration details of Players, Coaching and Support Staff, the Club is required to ensure the relevant person to whom the information relates, updates their information in the Play Football system no later than 72 hours of the change occurring.

2.10 INTERNATIONAL TRANSFER CERTIFICATE

- 2.10.1 In accordance with FIFA Statutes, a Player who was last registered (current or otherwise) with an overseas Club, inclusive of Players who are permanent residents or Citizens of Australia, require an International Transfer Certificate (ITC) from the National Association of that overseas Club, to be registered in Australia.
- 2.10.2 An ITC is an official document, physical or electronic, issued by a National Football Association, bearing its logo and physically signed by an authorised officer of that National Body. It can only be received by a Club via Football Australia or Football NT.
- 2.10.3 In accordance with FIFA Statutes, Football Australia is only able to request an ITC from another National Association during the Registration Periods for Football Australia, as specified in FIFA TMS (Transfer Management System).
- 2.10.4 In accordance with the National Registration Regulations 4.5(d), a player cannot be registered until the ITC document is received by Football Australia and Football NT.
- 2.10.5 Regardless of whether the player is made 'active' in the Play Football system or not, a player requiring an ITC is not eligible to play any Competition fixtures for any Club until the ITC document has been received by the Club.
- 2.10.6 It is the Club's responsibility to ensure an ITC document has been received prior to fielding the Player in a match. Clubs failing to satisfy these criteria will be deemed to have played an ineligible player and will be dealt with accordingly under these Competition Regulations.
- 2.10.7 On fulfillment of all ITC requirements, the Player can be added to the club's Player Roster.
- 2.10.8 To access the full 'Guide to International Transfer Certificates' document, visit www.ffa.com.au

2.11 DEREGISTRATION

- 2.11.1 Every Team shall have a maximum of 5 intra-club player de-registrations allotted per team. After the maximum de-registrations, a \$200 administration fee shall be applied per player de-registration.
- 2.11.2 This administration fee may be waived by the Competition Administrator under extenuating circumstances. Examples of extenuating circumstances include but are not limited to, long term player injuries and intrastate, interstate or international player movement.

- 2.11.3 The Competition Administrator shall review submissions from Clubs claiming extenuating circumstances on a case-by-case basis.
- 2.11.4 All Club submissions should be made in writing to the Competition Administrator, who will respond to the Club within ten (10) working days of receipt of finalised documentation from the Club. All mid-season player de-registration must follow 2.8. FNT Mid-Season Player Registration.
- 2.11.5 The Competition Administrator's ruling on extenuating circumstances shall be binding and non-appealable.

3 COMPETITION STRUCTURE

3.1 COMPETITIONS STRUCTURE AND NOMINATIONS

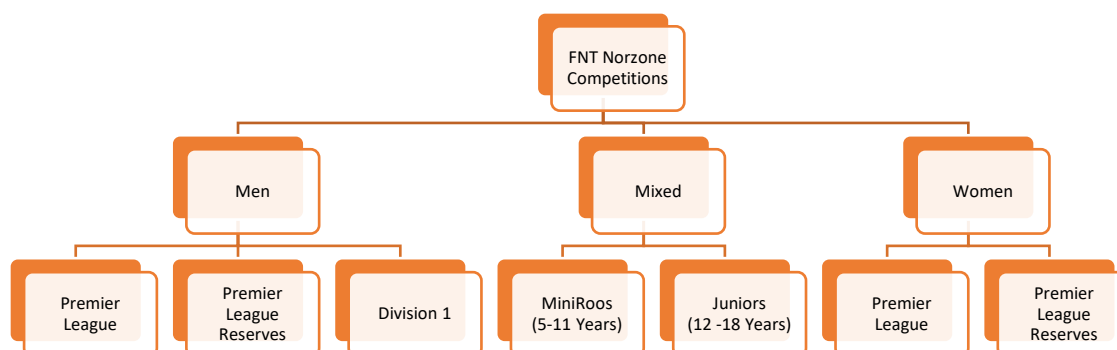


Figure: FNT Norzone Competition Structure

- 3.1.1 Football NT will conduct Competitions for Seniors in consultation with the Clubs participating in the Competitions and based on the annual Team registrations for the relevant Competition Season.
- 3.1.2 Clubs are required to nominate Teams to be included into Competitions. Clubs must submit their nominations to the Competition Administrator by 1 March 2022. Any requests to change shall be considered. A Club that makes a second change shall be issued a \$200.00 administration levy.
- 3.1.3 All matches shall be played in accordance with the Laws of the Game as decided by the International Football Association Board and distributed by FA. This is in conjunction with the Competition Regulations of FNT.

3.2 REPRESENTATIVE, INSTITUTE AND DEVELOPMENT SQUADS

- 3.2.1 Institute and Development squads may apply to participate in a Competition. The Competition Administrator and the Federation shall allocate these Teams to the most appropriate Competition. Development squad teams in the Junior or Senior Competitions will play for points, and at the discretion of the Competition Administrator, may be eligible for their respective Final Series.
- 3.2.2 In the event of a Team having three (3) or more Players selected into a Representative Team, the Club has the right to apply to the Competition Administrator for deferment of a Match that is affected, or likely to be affected, by the selection of those Representative Players. Such requests are not subject to the minimum timeframes specified within Rule 3.4.

- 3.2.3 Decisions of the Competition Administrator under Rule 3.2 shall be binding and are non-appealable.

3.3 SENIOR COMPETITION

3.3.1 Premier League

- a) The Premier League competition shall be capped at eight (8) Teams.
- b) No Club shall have any more than one Team participating within this competition.
- c) Football NT may reject the application of any Club to participate in the Premier League. The Competition Administrator's decision shall be final and not appealable.
- d) The following rules apply to the Premier League competition:
 - i. From 2022 the top eight (8) players in the Premier League competition are not permitted to play down in Reserves. This rule will apply in both Men's and Women's Premier League. The top 8 player details must be submitted to Football NT by COB 7 April 2022. FNT's Technical Director will review the lists over the first 3 rounds for the purpose of validation and verification. If any of the identified top player(s) has a long-term injury, then Clubs must nominate a replacement for assessment by the FNT Technical Director.
 - ii. Players in a Reserves or Division 1 competition can only take the field for Premier league 6 times, Once the field is taken for a 7th time they will be locked to Premier League. Women's Premier League Reserve players are exempt from this clause.
 - iii. Players 16 years of age and under are exempt from this rule and must not be listed in the top 8.
 - iv. Goalkeepers are also exempt from this rule and must not be listed in the top 8.
 - v. With Players free to move from 1st June, in the event a top 8 player leaves the club the club must submit to FNT for approval an updated list four (4) days before next sanctioned match.
- e) An accredited Sports Trainer shall be registered for every team participating in the Men's and Women's Premier League competition and a First Aid Certified person shall be registered for all Men's and Women's Premier Reserves League Teams. The Sports Trainer cannot be a player recorded on the playing team sheet. Teams found to be in breach of this rule shall have from 2022, 1 competition point deducted per offence. The accredited sports trainer must be registered on PlayFootball; only registered sports trainers will be allowed in the competition areas.

3.3.2 Premier League Reserves

- a) This is the reserve grade for Premier League.
- b) The Premier League Reserves competition shall be capped at ten (10) teams.
- c) All Reserves players can play down but from round 1, five (5) players must be nominated each week and those players can play down that weekend. Each player can play down a maximum of 5 times.
- d) Players registered into the Premier League Reserves competition, shall be permitted to play in the Premier League and Division 1 competitions.

3.3.3 Division One League

- a) Players registered in Premier League Men are not eligible to play in the Division 1 competition except for the MPL Goalkeeper who may play outfield after seeking approval from the Competition Administrator.
- b) "5 for 5 rules" will apply. Five Division 1 players can be nominated after round 3 as the players that can play up on 5 occasions for 25 opportunities for the MPLR coaches to utilise. These core 5 must be the club's best 5 Division 1 players. FNT Technical Director will validate and verify these players. If a 5 for 5 player has a long-term injury, then the Club may nominate a replacement for review. Please refer to clause 2.11 Deregistration for intra-Club player movements.
- c) One team per club can apply to enter the Division 1 League in accordance with Regulation 2.3.4 (b)
- d) The maximum number of teams in this competition will be at the discretion of the Competition Administrator/Federation.

3.4 ALTERATIONS TO DRAWS

- 3.4.1 Once fixtures have been published; no changes may be made unless otherwise provided for in these rules. A club may request a fixture change if it can demonstrate exceptional circumstances, in writing, not less than four weeks prior to the scheduled kick-off date. This request may or may not be approved by FNT in its discretion. The request must be facilitated by the Club President.
- 3.4.2 Any request for a fixture change must be accompanied by written consent from the opposition club President.

- 3.4.3 A club, which has been granted a fixture change, is responsible for all costs associated with the rearranged fixture. Failure to comply may result in the request being rejected without further consideration.
- 3.4.4 The Competition Administrator shall determine the date, time and venue for any re-scheduled match to be played. The Club that requested the re-scheduling of Match shall meet all costs incurred.
- 3.4.5 All rescheduled Matches must be played prior to the last Competition round of the Regular season.
- 3.4.6 Decisions of the Competition Administrator under Rule 3.4 are final and shall be binding and not appealable.

3.5 POSTPONED MATCHES

- 3.5.1 In the event a Match is not played due to poor weather or other causes which neither Team has any control over, or in the event a Match is ordered to be replayed, the Match shall be played as determined by the Competition Administrator.
- 3.5.2 All postponed Matches shall be played prior to the last Competition round of the Regular Season.
- 3.5.3 Decisions of the Competition Administrator under Rule 3.5 shall be binding and not appealable.

3.6 TEAMS WITHDRAWING OR EXPELLED FROM COMPETITION

- 3.6.1 For the purpose of this Rule the term "removed" shall include a Team that has withdrawn or been expelled from a Competition.
- 3.6.2 If a Team is removed from a Competition on or before the point of the season where all teams have played each other once, all points along with goals scored (for & against) that team will be erased. Any player votes gained in matches involving the removed team will be erased.
- 3.6.3 If a Team is removed after the point of the season where all teams have played each other once, the following applies:
 - a) All points along with goals scored (for & against) that team before the point of the season where all teams have played each other once will remain.
 - b) Every point along with goals scored (for & against) that team after the point of the season at which all teams have played each other once will be erased.
 - c) Withdrawing a team, a Club shall incur a \$1000 fine for withdrawing a team for an on-going competition

- 3.6.4 Decisions of the Competition Administrator under Rule 3.6 are final and shall be binding and not appealable.

3.7 MATCH POINTS

- 3.7.1 In all Competition fixtures where points are accrued Match points will be awarded as follows:

RESULT	POINTS
WIN	3 POINTS
DRAW	1 POINT
LOSS	0 POINTS
BYE	0 POINTS
NO RESULT	0 POINTS

- 3.7.2 The Competition Administrator reserves the right to record any fixture as a “No Result”.
- 3.7.3 The Team with the greatest number of points at the end of the Competition shall be declared as competition “Premiers”.
- 3.7.4 If two (2) or more Teams are level on points at the end of the Regular Season the following criteria shall be applied, in order, until one of the Teams can be determined as the higher ranked:
- a) highest goal difference;
 - b) lowest number of red cards accumulated
 - c) lowest number of yellow cards accumulated
 - d) highest number of goals scored
 - e) highest number of points accumulated in matches between the Teams concerned
 - f) highest goal difference in matches between the Teams concerned
 - g) highest number of goals scored in matches between the teams concerned
 - h) toss of coin

3.8 FINALS SERIES

- 3.8.1 To be eligible to play for a Team in the final series the rules from in-season continue to apply. The following additional rules apply for each competition during final series in addition to in-season rules.
- a) No MPL player can play finals in Division 1.
 - b) Players that meet criteria 3.3.1 (d) can only play in the Premier League finals.

- c) A player is deemed a Premier League player if he/she is in the starting eleven in more Premier League matches than in Premier Reserve grade and therefore will not be eligible to play finals in the Premier Reserve grade final series.
 - d) Reserve grade players can play down for finals if the 5 players are nominated before the final and the players nominated have not played more than 5 matches for the Division 1 side.
 - e) Division 1 players may play up in finals.
 - f) A player cannot switch between Division 1 teams within one club for the finals.
- 3.8.2 A Player can qualify for only one final series except in accordance with provisions 3.8.1.
- 3.8.3 A Team that is unable to participate in the Final Series may be replaced with the next best- placed Team from within the same Competition. This decision will lie with the Competition Administrator.
- 3.8.4 Finals Structure
- Teams that place first and fourth shall play in Semi-Final 1 with the winning Team proceeding directly to the Grand Final
- Teams that place second and third shall play in Semi-Final 2 with the winning Team proceeding directly to the Grand Final
- The winner of the Grand Final shall be declared as competition "Champions"
- 3.8.5 If scores remain level after normal playing time, extra time as specified in these Rules shall be played to determine a winner.
- 3.8.6 If after extra time the Match is still drawn, the winner shall be determined by penalty kicks in accordance with the Laws of the Game.
- 3.8.7 Where both Teams field an ineligible Player in a semi-final, or the result of a semi-final is declared a 'no result' then the winner of the other semi-final shall be declared as competition "Champions".
- 3.8.8 Extra time applies to MPL, WPL, MPLR and WPLR only. Division 1 go straight to penalties.

3.9 EXTRA TIME

- 3.9.1 Extra time to determine the winner of a Match shall only be played in all Premier League division final series Matches, and the following shall apply:
- a) Two equal periods of fifteen (15) minutes shall be played.
 - b) At the completion of normal time, a five (5) minute break shall be granted. All Players are to remain on the field and only the designated Team Officials from

within the technical area can move onto the field of play. Substitutes or substituted Players are not permitted to enter the field of play.

- c) A coin shall be tossed to determine the direction of play for the first period of extra time.
- d) After the first period of extra time, the Teams shall change ends immediately. There shall be no half time break within extra time.
- e) Stoppage time shall be played.
- f) If scores remain equal at the conclusion of both periods of extra time, penalty kicks will be taken in accordance with the Laws of the Game to determine the winner of the Match.

3.10 VENUES AND ADMISSION CHARGES

- 3.10.1 The Competition Administrator, in consultation with Football NT and Clubs, shall have the power to determine venues for all Competitions.
- 3.10.2 The Competition Administrator, in consultation with the Football NT, shall determine the charge for admission to all Matches, at all venues, prior to the commencement of any Season.
- 3.10.3 Players or Club Officials who refuse to pay the prescribed admission charge shall be fined \$100/offence. The Competition Administrator may also apply further sanctions.
- 3.10.4 Clubs where the Player or Club Official is associated shall also be fined \$100/offence. The Competition Administrator may also apply further sanctions.

PLAYERS	\$5
ADULTS	\$8
CHILDREN (14 and under)	Free
STUDENTS/PENSIONERS	\$5
FAMILY PACKAGES	\$20 (2 adults/2 students)

TABLE: ENTRY FEE STRUCTURE

4 MATCH DAY

4.1 COACH ELIGIBILITY

4.1.1 From 2019, the minimum acceptable accreditation for a Club Coach of a Premier League Men's, Reserves or Women's Team was determined as the FA Senior Football Certificate. Note: All Coaches shall be registered into the PlayFootball system.

4.1.2 Any Club that fields a Team, where the Club Coach does not comply with rule 4.1.1, shall forfeit all match day points within that round of competition.

4.1.3 Any Club Coach, who fails to comply with rule 4.1.1, shall not be permitted to enter the field of play, Player's race, change rooms, technical area or substitute bench at any time before, during or after a Match.

4.2 PLAYER ELIGIBILITY

4.2.1 A Player is only eligible to play in a Match for a Club if they:

- a) have been registered in accordance with the FA National Registration Regulations;
- b) has paid their full registration fee plus all outstanding money owed to Football NT, a Club and Competition Administrator;
- c) are not subject to a suspension; in accordance with rule 5.4
- d) meet the applicable Competitions age group and gender guidelines
- e) meet Competition requirements for Final Series or playoffs, where applicable.

4.2.2 It is the responsibility of each Club to ensure the eligibility of its Players in accordance with these rules.

4.2.3 Where a Club(s) believes that a player who is younger than 16 for boys and 14 for girls has the capacity to safely and competitively play within this competition, the Club(s) may apply to the Competition Administrator for a technical assessment.

4.2.4 Where a Club has more than one Team within the same Competition the club must nominate which players shall play for each Team. Players are eligible to play up for another Club team, but Players are not eligible to play for any other Club team within the same division or a lower division.

4.2.5 If there is a dispute about the eligibility of any Player, the Match Official must note the details on the Team Sheet and submit the Team Sheet to the Competition Administrator.

- 4.2.6 Any Club that wishes to lodge an official dispute regarding the eligibility of a Player must do so in accordance with these Rules in writing.
- 4.2.7 Any Club found to have played an ineligible Player shall be fined \$300 and the Match shall be awarded to the opposing Team with a score of 3-0 or the actual score of the Match, whichever is greater.
- 4.2.8 Any Club found to have knowingly or willfully engaged in the "Ring-In" of a Player or Players in any Match shall be fined \$500.00 and the Match shall be awarded to the opposing Team with a 3-0 score or the actual score of the Match, whichever is greater. The Club may also be cited to appear before the Disciplinary Committee.
- 4.2.9 Repeat offenders may incur additional sanctions, as determined by the Competition Administrator.

4.3 DETERMINATION OF MATCHES PLAYED

Only Players who are recorded on an official match card may take the field of play during a Match. Players listed on an official match card shall be deemed to have participated when calculating the number of qualifying Matches played. The official Team Sheet or SportsTG Log Report shall be the sole record and determinant of Matches played.

Decisions of the Competition Administrator under Rule 4.3 are final and shall be binding and not appealable.

4.4 NUMBER OF PLAYERS

- 4.4.1 A Competition Match may not start if either Team consists of fewer than seven (7) Players.
- 4.4.2 A Competition Match may not continue if either Team has fewer than seven (7) Players.
- 4.4.3 If a Match has commenced and is subsequently abandoned due to a Team being reduced to fewer than seven (7) Players, then the offending Team shall be deemed to have forfeited the Match and shall be sanctioned in accordance with Rule 4.12.

4.5 DURATION OF MATCHES

4.5.1 The duration of all Matches shall be as specified in Table: Competitions Structure and may include drinks breaks as per heat policy.

Competitions	Players	Substitutions	Playing Time	Half Time	Ball Size
Premier League	11 versus 11 with Minimum of 7 and maximum of 11 on field.	Maximum 5 Substitutes	2 X 45 Mins	15 Mins Maximum	5 (Pressure Equal To 8.5 Psi – 15.6 Psi)
Premier League Reserves		Unlimited During The Match			
Division one Men's					

TABLE: COMPETITONS STRUCTURE

4.6 FAILURE TO PLAY A MATCH

- 4.6.1 Any Team who without just cause, fails to play a Match at the scheduled time shall be deemed to have forfeited the Match.
- 4.6.2 The Club will be fined \$500 and Match Officials will be entitled to the Match fees normally payable and these fees shall be paid by the Team that forfeits the Match. Where a forfeited match is scheduled to be played at a Duty Club managed venue, the Duty Club shall be entitled to \$250 from the \$500 fine.
- 4.6.3 Any Team who has forfeited three (3) consecutive matches shall be asked to show cause as to why they should not be suspended or expelled from the Competition.

4.7 ABANDONED MATCHES

- 4.7.1 Matches in any Competition including final series may only be abandoned by a decision of the Match Official.
- 4.7.2 A Team, or members thereof, who due to their conduct cause a Match to be abandoned shall be deemed to have forfeited the Match.
- 4.7.3 If both Teams are responsible for conduct that leads to the abandonment of a Match, then the Match shall be deemed a "no contest" and no points shall be awarded to either Team and no Player points shall be gained from the Match. Additional sanctions may also be imposed by the Competition Administrator.

- 4.7.4 If a Match has been abandoned then Match reports are required to be submitted to the Competition Administrator, by Match Officials and Team officials, no later than 9.00am of the next business day following the Match.
- 4.7.5 If 72 minutes or more (Eighty Percent) of normal time of a Match has been played, then the score at the time of abandonment will stand. Normal time does not include time added or halftime.
- 4.7.6 If less than 72 minutes of normal time of a Match has been played before the time of abandonment, then the Match will be replayed in full at a time and venue to be determined by the Competition Administrator.

4.8 TEAM SHEETS

- 4.8.1 Each Team shall submit a completed Team Sheet to the Match Referee 30 minutes prior to the commencement of each Match, which also needs to be entered into competition platform 24hours before kick-off. Clubs found to be in breach of this rule shall be fined \$200 per offence. Teams in Senior Competitions shall use the "Team Sheet" format prescribed by the Competition Administrator. If any club/team is not able to do so, then match officials must submit incident report for such.
- 4.8.2 Players cannot be added to the Team Sheet after the commencement of the Match.
- 4.8.3 The maximum number of Players that can be listed per Team on a Team Sheet is specified in Regulation 4.5.1.
- 4.8.4 In the event SportsTG cannot produce a team sheet, a manual hand-written team sheet will be deemed acceptable under the supervision of home ground official. Handwritten team sheets need to be clear and legible. Handwritten team sheets will be accepted on the condition that SportsTG can confirm technical issues were experienced at the time in question.
- 4.8.5 The numbers on the back of shirts must correspond with the numbers on the Team Sheet and any change to a number must be made with approval of the Match Referee.
- 4.8.6 The only Players entitled to play in any Match are those registered Players who are listed on the Team Sheet before the commencement of the Match. Teams that field a Player contrary to this Rule shall be deemed to have played an ineligible Player.

- 4.8.7 At the conclusion of the Match, the Referee shall note the scores at half time and fulltime, the goal scorers, any disciplinary action then sign the team sheet, and lodge the team sheet with the Competition Administrator by 9.00am next business day. In the event a referee is not appointed for a match; team officials for both teams are responsible for compliance of this rule. A copy of the team sheet must be sent to the Competitions Administrator by 9.00am next business day. Clubs found to be in breach of this rule shall be fined \$100.00
- 4.8.8 When a Player has been cautioned or sent off, the Referee shall note on the Team Sheet the appropriate offence code for which the Player was cautioned or sent off. The Referee shall submit a Send Off Report for the send-off offence to the Competition Administrator by 9.00am next business day, in accordance with Rule 4.15.2.

4.9 MATCH SHIRTS

- 4.9.1 Each Club shall register its "Home" and "Away" playing uniform with Football NT prior to the commencement of the Season. This shall include the shirt, shorts, and socks.
- 4.9.2 All Clubs must nominate a "Home" and "Away" playing uniform. The away playing uniform shall not clash with the home team playing uniform. A club's away playing uniform for players and a goalkeeper should preferably include a change of colour for shirts, shorts and socks.
- 4.9.3 It is the responsibility of the Away Team to ensure that an alternative playing uniform is available for each match day.
- 4.9.4 On all occasions, the goalkeepers must be clearly distinguishable from the colour of shirts worn by all other players and the referee.
- 4.9.5 Where the competition Administrator deems a club's proposed uniform to be too similar to another club, it may veto use of the proposed uniform.
- 4.9.6 The Competition Administrator reserves the right to require all Club Teams to place a competition sponsorship logo on the right-hand breast or on the right sleeve of all match shirts in accordance with given uniform style guide. (see next page)



Figure: FNT Senior competitions playing strips style guide

4.10 MATCH BALLS

The Home Team shall provide the Match Officials with four (4) FIFA quality approved match balls or approved equivalent Match balls in accordance with regulation 4.5.1 (Competition Structure). Clubs found to be in breach shall be fined \$100 /offense.

4.11 MATCH OFFICIALS

4.11.1 FA accredited Match Officials shall be supplied wherever possible, subject to available numbers as follows;

League Matches	a Referee and two assistant Referees
Final Series	A Referee, two assistant referees and a fourth Official.

Table: Appointment of Match Officials

4.11.2 Priority of Match Officials allocation shall be: 2022 Competition Structure

- a) Premier League Competition – Men and Women
- b) Premier Reserves – Men and Women
- c) All other Senior Competitions

- 4.11.3 In the event no accredited Match Official is present to officiate a Match, both teams shall appoint a Referee to take charge of the Match. This shall take place within five (5) minutes of the scheduled kick-off time.
- 4.11.4 In circumstances where an Assistant Referee has not been appointed, each Team must provide a Club Assistant Referee to assist the Referee as follows:
- a) If one Assistant Referee has not been appointed the Home Team shall provide an Assistant Referee.
 - b) If two Assistant Referees have not been appointed both the Home and Away Teams shall provide one Assistant Referee each.
- 4.11.5 Teams found to be in breach of rules 4.11.3 and 4.11.4 shall be fined \$200 for failing to provide a Match Official(s).
- 4.11.6 Teams must play Matches regardless of whether the Competition Administrator Appointed Match Officials are present to officiate. Such Matches are to commence within ten (10) minutes of the scheduled kick-off time.

4.12 FORFEITS

- 4.12.1 Where a Match has been declared a forfeit, the Match shall be recorded as a win to the non-forfeiting Team with a score of 3-0.
- 4.12.2 Any Team deciding to forfeit a scheduled Match shall inform the Competition Administrator in writing by 5 pm of the Wednesday prior to a weekend fixture or no later than 2 working days prior to the scheduled kick-off time of a weekday fixture. A Team failing to notify the Competition Administrator within the required time shall be fined \$500.
- 4.12.3 A Team not ready to commence a Match within ten (10) minutes of the scheduled kick-off time shall be deemed to have forfeited the Match and shall be fined \$500. Where a match has commenced, and a Team has fewer than the minimum number of Players required for completion of the Match, the Match shall be awarded to the opposing Team with a score of 3-0 or the actual score of the Match, whichever is greater.
- 4.12.4 Where a Match is forfeited under this Rule all appointed Match Officials shall be entitled to the Match fees (if the forfeit is on match day) normally payable and these fees shall be payable by the Club which forfeits the Match.

4.13 TECHNICAL AREA

- 4.13.1 The following rules shall be enforced where technical areas are provided at venues. Players and Officials shall be registered of PlayFootball and shall be subject to FIFA Laws of the Game whilst sitting on the Team bench or present within the Team technical area.
- 4.13.2 A maximum of nine (9) persons comprising five (5) Players and four (4) Team Officials are entitled to sit on the Team bench or be present within the Team technical area during any Match. Players and Team Officials are to remain seated at all times during a Match, whilst in the Team technical area, with only one (1) Team Official allowed to stand within the Team technical area to relay instructions.
- 4.13.3 All Players and Team Officials shall be suitably attired when present within the Team technical area. All Players must wear their Club match uniforms, boots and substitute bibs. All Team Officials shall wear closed shoes, shorts/skirt/pants and their Club polo shirt as a minimum acceptable standard and must wear Football NT Provided Accredited identification at all times while in technical area. Note: thongs, sandals or work boots are not recognized as meeting the minimum acceptable standards and bare feet are strictly prohibited at any time throughout a Match. Clubs which fail to comply with this rule shall be fined \$250 per offence and additional sanctions may apply for repeat offences.
- 4.13.4 Team Officials not listed onto the Team Sheet shall not be permitted to sit on the Team bench or to be present within the Team technical area or the competitions area at any time during the Match. Clubs which fail to comply with this rule shall be fined \$250 per offence and additional sanctions may apply for repeat offences.
- 4.13.5 Players and Officials within the Team Technical Area and the Competitions Area shall behave in a responsible manner and shall not use offensive, insulting and abusive language and/or gestures at any time. Clubs which fail to comply with this rule shall be in breach and shall be fined \$250 per offence and additional sanctions may apply for any repeated offences. Any Team Official that is expelled from the field of play, being the Team technical area, shall incur a minimum one (1) match suspension. The official shall be fined a minimum of \$100. Sanctions will be in accordance with the disciplinary table of offences.

4.14 INTERCHANGE AND SUBSTITUTIONS

- 4.14.1 All interchange or substitute Players shall be named on the Team Sheet and shall sit on the Team bench with a neutral colour vest within the designated Team technical area throughout the Match as per the Laws of the Game 2021/22.

4.14.2 All substitutes or interchanges are to be made known to the assistant Referee or fourth official who shall then notify the Referee of the proposed substitution or interchange.

4.14.3 All substitutions or interchanges within Competitions are at the discretion of the Referee and shall take place at the halfway line after the Referee has stopped play and signaled for the substitution to occur.

4.15 MATCH REPORTS

4.15.1 Match reports shall be submitted to the Competition Administrator by 9.00 am of the first business day following the Match for which the report is being lodged.

4.15.2 Match reports include send off reports by Match Officials and Incident reports by Match Officials.

4.16 GROUNDS

4.16.1 Duty Club Manager

All clubs will be provided with the duty club manual and to complete such All Clubs shall nominate a duty club manager every week who shall complete the duty club manual and also perform such duties as listed below and as shall be directed from time to time by FNT.

- a) The duty club manager must be present at all matches
- b) The duty club manager must be aged at a minimum of 18 years.
- c) A duty club manager will be identified and introduced to the referee a minimum 30 minutes prior to the commencement of the match.
- d) The duty club manager must always wear an identifying bib.
- e) The duty club manager must be identifiable and visible to the match officials and spectators at matches.
- f) Ensure that the technical area is properly defined as laid down in the Laws of the Game and these Regulations.
- g) Take all reasonable steps to ensure the good order and behaviour of spectators
- h) Assist match officials where required (e.g. organise assistant referees) and assist with the security of the match officials whilst at the venue including escorting referees from the field of play at half and full time.

4.16.2 Exclusion Zone

All persons, apart from those named on the relevant team sheets, referees or assistant referees, must be behind fences surrounding enclosed pitches or a minimum of two (2) metres away from all sidelines or four (4) metres from all goal lines at all matches. Such an area shall be termed the "pitch exclusion zone".

Those grounds that are not enclosed are required to have marked a secondary line outside the field of play, preferably in an alternate colour identifying the pitch exclusion zone or by use of ropes and pegs which clearly outlines the area.

5 DISCIPLINE, DISCIPLINARY COMMITTEE, CHARGES AND DISPUTE RESOLUTION

5.1 Please refer to FNT Disciplinary Process for Offences and Sanctions document.

6 FINANCE

6.1 REGISTRATION FEES

6.1.1 Football NT shall determine the annual schedule of fees and payment timetable prior to calling for nominations from Clubs.

6.1.2 There are four components that comprise the total Registration Fee paid by a Player to a Club to enable them to register to participate in an FNT Competition:

- a) FA National Registration Fee as determined by FA
- b) Football NT Fee as determined by Football NT that includes insurance, development and administration fees;
- c) Competition Fee set by the Competition Administrator to cover administrative costs in conducting the Competition;
- d) Club levy set by each individual Club.

6.1.3 All levies must be documented within PlayFootball (National Registration Database) and made available to all Players at the time of registration.

FNT Player Registration Fees for 2022	
MiniRoos (age 5 to 11 years)	\$139.00 (includes FA levy of \$14.00)
Juniors (ages 12 to 18 years)	\$184.00 (includes FA if levy \$14.00)
Seniors – Division 1	\$225.00 (Includes FA Levy of \$33.00)
Men's Premier league and Reserves	\$323.00 (includes FA levy of \$33.00 for 18+ players) or \$304 (Includes FA levy of \$14 for Under 18)
Women's Premier League and Reserves	\$298.00 (includes FA levy of \$33.00 for 18+ Players) or \$279 (Includes FA levy of \$14 for Under 18)
Note: Players will pay a \$5.00 entry fee into the stadium on match day	
FNT Referee Registration Fees for 2022	
Referee registration fee	No fee will be charged

SUMMARY TABLE – REGISTRATION FEES 2022

6.2 MATCH FEES

- 6.2.1 Where applicable, Clubs will be invoiced monthly for costs associated with a Match including:
- a) Match Officials payments;
 - b) Ground hire
 - c) Line marking
 - d) Security;
 - e) Other costs associated with staging the Match.

6.3 PAYMENT OF INVOICES

- 6.3.1 All fees, levies, ground hire charges or fines are payable by the due date for payment as stated on the invoice or before first round of finals series (whichever is earlier) unless agreed otherwise. Clubs not doing such may not be allowed to participate in final series.
- 6.3.2 For the avoidance of doubt, debts shall include monies owed to Football NT or other Clubs. A Club may challenge individual fees included in an invoice however payment of the unchallenged components of the invoice is required to be made by the due date for payment, as stated on the invoice.

6.4 8.4. SANCTIONS

- 6.4.1 Should the Competition Administrator not be satisfied with the given reason for non-payment of an outstanding debt payment may be pursued through a debt collection service.
- 6.4.2 All outstanding debts must be paid in full before any nominations will be accepted for a new Season.

6.5 FINES

At its absolute discretion the Competition Administrator or Football NT may waive or reduce Club's fines and penalties.

6.6 GATE REVENUE

All monies derived from entrance fees to Football NT Matches shall remain the property of the Football NT.

6.7 RECORD MAINTENANCE

All Clubs that participate in Matches sanctioned by Football NT shall maintain financial records in accordance with the Associations Act (Northern Territory).

6.8 BONDS

- 6.8.1 Football NT may implement and determine a bond prior to the commencement of a Competition. Bond monies are held in trust for a period determined by the Competition Administrator.
- 6.8.2 Clubs may be asked to lodge a bond for each senior men's and women's Team at the time of the acceptance of their nomination into a Competition.
- 6.8.3 Outstanding debts may be deducted from any bond monies if implemented.
- 6.8.4 Where a Club requires their bond monies to be refunded at the conclusion of the playing Season:
- a) the request must be made in writing at least fourteen (14) days prior to the end of the Competition;
 - b) Outstanding debts shall be deducted from the bond monies prior to any refund being made;
- 6.8.5 Clubs shall lose bond monies in the following circumstances:
- a) Withdraws a Team(s) from the Competition;
 - b) Club official(s), Player(s) or supporters are found guilty of bringing the game into disrepute or for violent conduct.

7 INTERPRETATIONS AND DEFINITIONS

7.1 INTERPRETATIONS

In these Regulations, unless a different intention shall appear:

- a) word importing the singular number only shall include the plural number and vice versa;
- b) words importing the masculine gender only shall include the feminine gender;
- c) words denoting persons include incorporated and unincorporated Teams and Clubs; and
- d) words or expressions shall be interpreted in accordance with the provisions of the Interpretation Act and that Act as in force on the date on which these Regulations are adopted by Football NT.

7.1.1 References to persons include their respective executors, administrators, personal representatives, and successors in title (as the case may be).

7.1.2 Expressions referring to writing are construed as including references to printing, lithography, photography, and other modes of representing or reproducing words in a visible form.